

MS (RESEARCH) CENTRE FOR BIOMEDICAL ENGINEERING- IIT DELHI

ABOUT

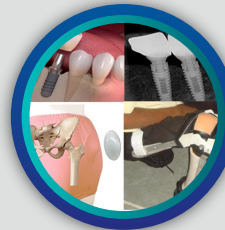
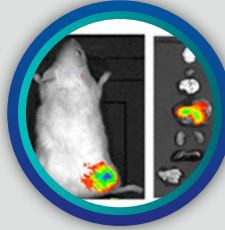
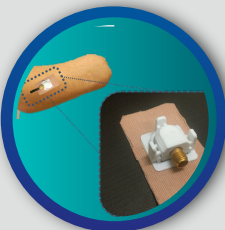
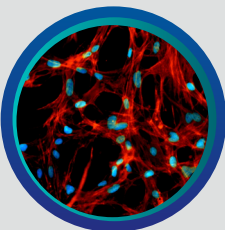
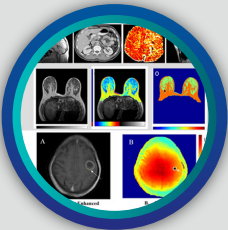


OPEN HOUSE
DATE:
12th July 2024
11:am

- Multidisciplinary program designed only for medical and allied disciplines.

- Integrating medicine and engineering to produce Deep Tech Innovators.

- Highly project-centric program with Clinical/Industrial Immersion



ADVANTAGES



Pave a way to start entrepreneurial or deep medical technology R&D journey



Clinical Practice along with the degree



Competitive high value fellowship.



Offers smooth transition to PhD programme.

ELIGIBILITY

- ✓ MBBS, BDS, BVSC, BAMS, BHMS, BPT, BPO, BPharm, MD/MS/DM/ MCh, MDS/MPT/MPharm
- ✓ 60% marks or 6.0 CGPA on a 10-point scale
- ✓ Qualified NEET (PG), AIIMS(PG), PGI(PG) or any other national level PG exam in respective specialty

CONTACT

Scan to join Open house



HEAD CBME

HOD Office: 01126596396

Email: hodcbme@admin.iitd.ac.in

PROGRAMME COORDINATOR

CBME Office: 01126596132

Email: msr_cbme_coordi@iitd.ac.in

<https://zoom.us/j/96037590563?pwd=aFFXekg4aDF1WWIRSENmWWIxSmNlZz09>

LEARN MORE <https://cbme.iitd.ac.in/>